

07976 948445

bidwells.co.uk

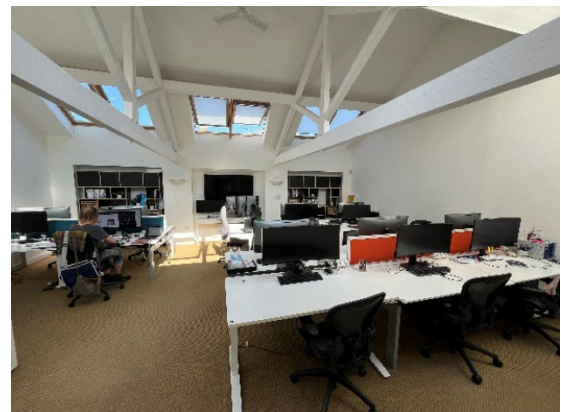


## OFFICE TO LET

### 16C WORCESTER PLACE, OXFORD, OX1 2JW

#### In Brief

- 1,837 sq ft
- Two-storey building
- Open plan first floor layout and ground floor break out space with partitioned meeting rooms
- Recently refurbished with high quality finish
- Excellent natural light
- Generous breakout facilities
- Disabled WC & Shower facility
- Ideal location in close proximity to a range of amenities and public transport



07976 948445

bidwells.co.uk



## Location

Worcester Place is located in the heart of Oxford in close proximity to a number of amenities including restaurants such as Brasserie Blanc and Branca.

Situated to rear of Worcester Place, the property is a short 10-minute walk from the city centre, the Oxford Train Station and the Westgate Shopping Centre.

## Description

The property is comprised of high quality offices, partitioned meeting rooms and break out spaces spread across two floors which were recently refurbished in 2022.

Suitable for a wide range of uses, 16C Worcester Place offers an ideal option for occupiers looking for a quiet location within a close proximity to Jericho that encourages productivity and collaboration.

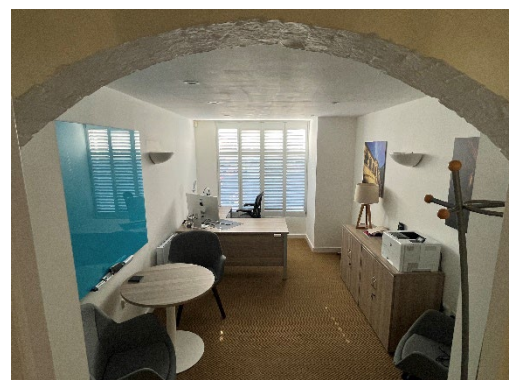
The property comes with integrated appliances including a dishwasher, fridge freezer and combi microwave oven.

## Accommodation

First Floor: 1,056 sq ft (98 sq m) NIA

Ground Floor: 781 sq ft (72 sq m) NIA

Total: 1,837 sq ft (170.72 sq m) NIA



## Additional information

### Terms

The property is available by way of a new full repairing and insuring lease for a minimum term of 3 years.

### Legal Costs

Each party to bear their own costs.

### Value Added Tax

All terms quoted are exclusive of VAT where payable.

### Rent

Rent available on application (plus service charge)

### Business Rates

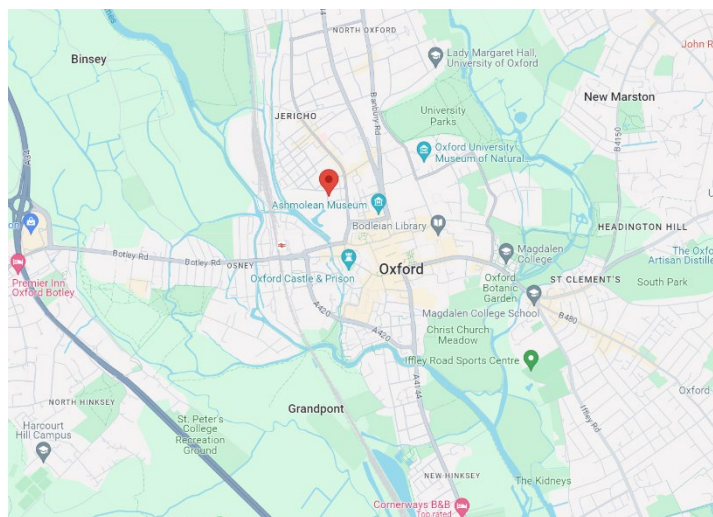
Rateable Value (2023) - £60,500

### Enquiries

Duncan May

07879 883886

Duncan.may@bidwells.co.uk



Jake Allen

07976 948445

jake.allen@bidwells.co.uk

### Important notice

These particulars do not form part of any offer or contract and should not be relied upon as statements or representatives of fact. Bidwells LLP has no authority to make or give in writing or verbally any representation or warranties in relation to the property. Any areas of measurements or distances are approximate. The text, photographs and plans are for guidance only and are not necessarily comprehensive. No assumptions should be made that the property has all necessary planning, building regulation or other consents. Bidwells LLP have not carried out a survey, nor tested the services, appliances or facilities. Purchasers must satisfy themselves by inspection or otherwise. In the interest of Health & Safety, please ensure that you take due care when inspecting the property.

Bidwells LLP is a limited liability partnership registered in England & Wales (registered number OC344553). Registered head office is Bidwell House, Trumpington Road, Cambridge, CB2 9LD, where a list of members is available for inspection. May 2024